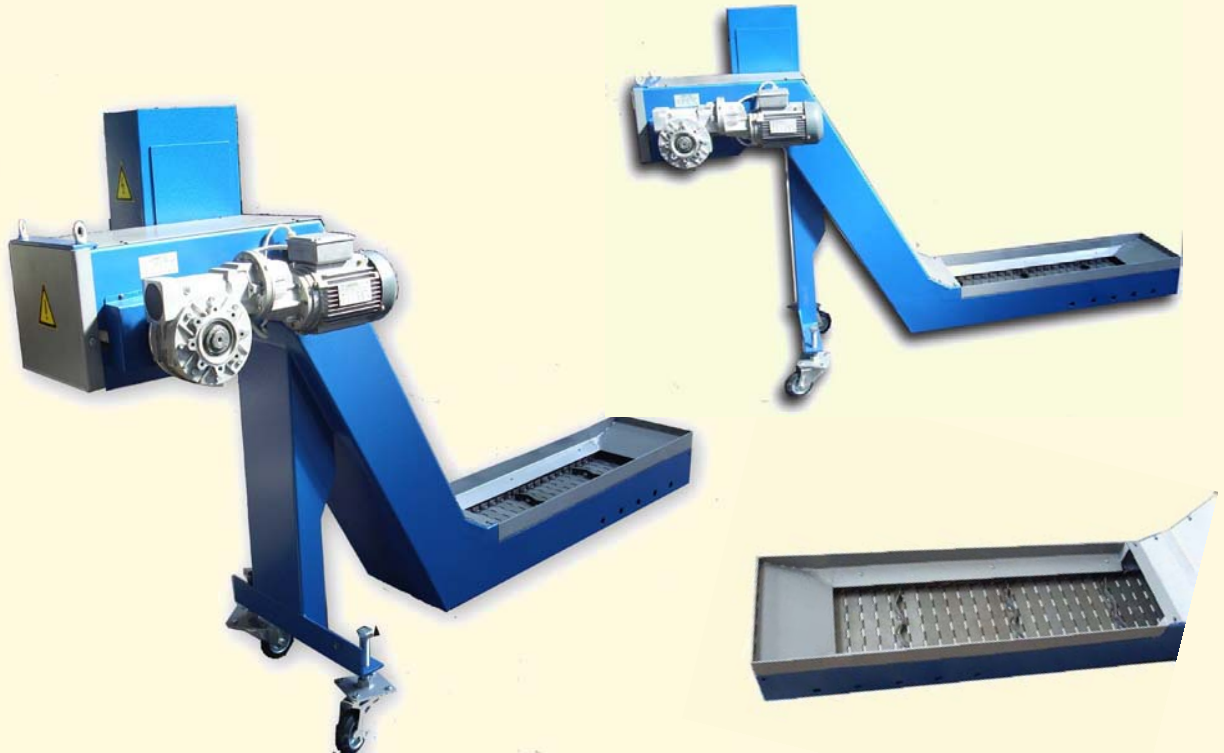


## Chip Conveyors

with hinged steel belt



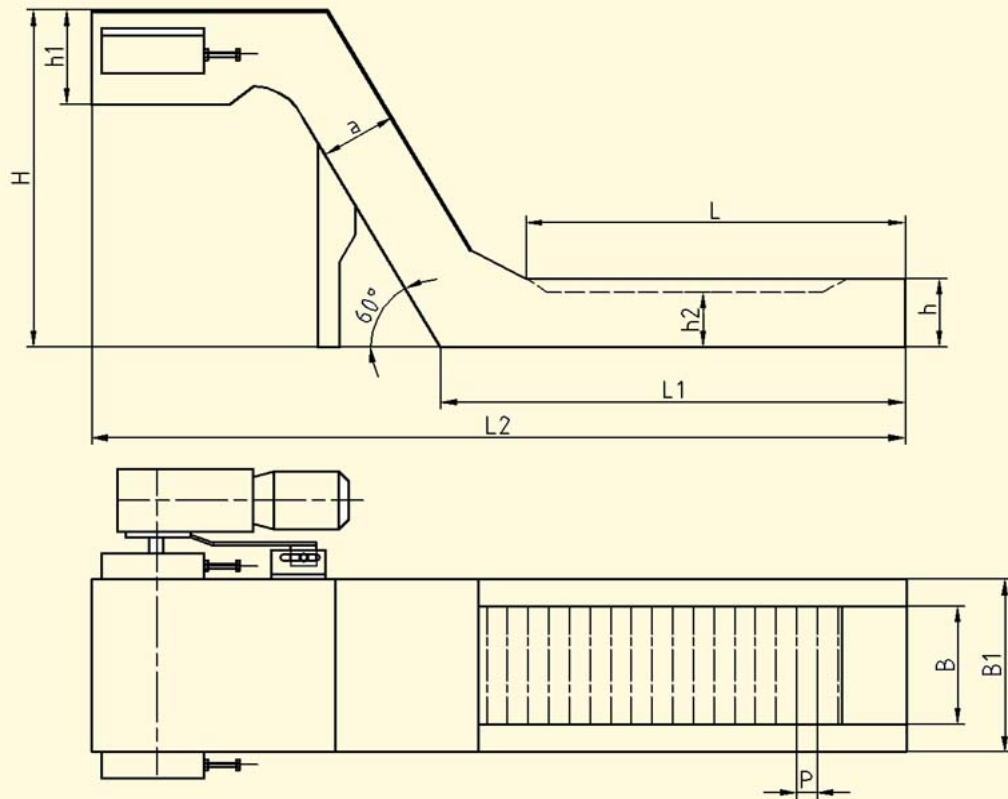
### Technical data

- TSL 63 with chain pitch P 63 mm**

| Parameter                              |               | Value                      |        |        |        |        |        |        |  |
|--|---------------|----------------------------|--------|--------|--------|--------|--------|--------|--|
| Width of the receiving section         | <b>B</b>      | 125, 200, 280, 435, 590 mm |        |        |        |        |        |        |  |
| Width of steel belt                    | <b>W</b>      | B+30                       |        |        |        |        |        |        |  |
| Width of frame                         | <b>B1</b>     | B+130                      |        |        |        |        |        |        |  |
| Length of the receiving section        | <b>L</b>      | Up to 15 000 mm.           |        |        |        |        |        |        |  |
| Length of frame of receiving section   | <b>L1</b>     | L+204                      |        |        |        |        |        |        |  |
| Height of frame of receiving section   | <b>h / h2</b> | 223/175*                   |        |        |        |        |        |        |  |
| Height of frame of discharging section | <b>h1</b>     | 272                        |        |        |        |        |        |        |  |
| Height of frame of slope section       | <b>a</b>      | 275                        |        |        |        |        |        |        |  |
| Overall height                         | <b>H</b>      | 673                        | 733    | 823    | 1073   | 1273   | 1600   | 1800   |  |
| Overall length                         | <b>L2</b>     | L+1170                     | L+1205 | L+1255 | L+1399 | L+1515 | L+1705 | L+1820 |  |

*This model can be matched with CNC machine tools, conventional machine tools which give a lot of chips - short, long and chip bundle. In case metal steel belt 63A with high tension is used, this model can be matched with extrusion press, forging press, punching press or laser cutting and turnkey process*

\* Modification TSL 63T (with short height of frame of collecting section) requires less space for mounting of conveyor to the main machine.



• **TSL 50 with chain pitch  $P$  50.8 mm**

| Parameter                              | Value  |
|--|--|
| Width of the receiving section         | <b>B</b> from 90 to 450 step 30 mm                       |
| Width of steel belt                    | <b>W</b> B+30  |
| Width of frame                         | <b>B1</b> B+125  |
| Length of the receiving section        | <b>L</b> Up to 10 000 mm.                                |
| Length of frame of receiving section   | <b>L1</b> L+188  |
| Height of frame of receiving section   | <b>h / h2</b> 175/150*                                   |
| Height of frame of discharging section | <b>h1</b> 300  |
| Height of frame of slope section       | <b>a</b> 220   |
| Overall height                         | <b>H</b> 800    1000    1250    1600    1800             |
| Overall length                         | <b>L2</b> L+1045    L+1160    L+1305    L+1507    L+1623 |

*This model can be matched with CNC machine tools, conventional machine tools which give a lot of chips - short, long and chip bundle and small press and laser cutting machines*

• **TSL 38 with chain pitch  $P$  38.1 mm**

| Parameter                              | Value   |
|--|---|
| Width of the receiving section         | <b>B</b> from 75 to 375 step 25 mm            |
| Width of steel belt                    | <b>W</b> B+25                                 |
| Width of frame                         | <b>B1</b> B+105                               |
| Length of the receiving section        | <b>L</b> Up to 6 000 mm.                      |
| Length of frame of receiving section   | <b>L1</b> L+160                               |
| Height of frame of receiving section   | <b>h</b> 140                                  |
| Height of frame of discharging section | <b>h1</b> 245                                 |
| Height of frame of slope section       | <b>a</b> 180                                  |
| Overall height                         | <b>H</b> 800    1000    1250    1600          |
| Overall length                         | <b>L2</b> L+960    L+1075    L+1220    L+1420 |

*This model can be matched with various machine tools, machining centers and drills that produce a small amount of short or long chips.*

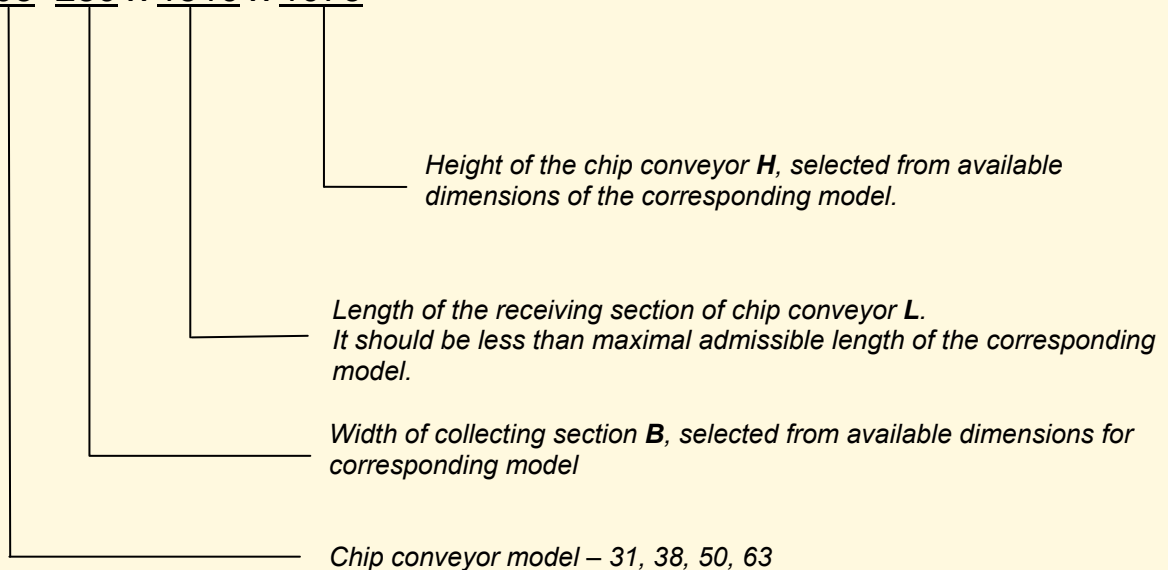
● **TSL 31 with chain pitch P 31.75 mm**

| Parameter                              | Value     |   |
|--|-----------|---|
| Width of the receiving section         | <b>B</b>  | 130, 180, 230   |
| Width of steel belt                    | <b>W</b>  | B+20  |
| Width of frame                         | <b>B1</b> | B+90  |
| Length of the receiving section        | <b>L</b>  | Up to 4 000 mm.   |
| Length of frame of receiving section   | <b>L1</b> | L+136   |
| Height of frame of receiving section   | <b>h</b>  | 130   |
| Height of frame of discharging section | <b>h1</b> | 140   |
| Height of frame of slope section       | <b>a</b>  | 140   |
| Overall height                         | <b>H</b>  | 630    800    1000    1150    1250    1600              |
| Overall length                         | <b>L2</b> | L+905    L+1003    L+1119    L+1205    L+1263    L+1465 |

This model can be matched with various machine tools, machining centers and drills, which produce paucity amount of short chips

For all models dimension **c** must be provided by customer.  
 If ordered, height **H** may differ from those of the corresponding model.  
 On order, angle of slope may be different from 60°.  
 Main color of painting - RAL 5015.

TSL 63 280 x 1510 x 1073



## Options

1. Coolant tank
2. Pump
3. Drive left/right side
4. Brush for tiny chip cleaning.
5. "Comb" for separating long chips.
6. Different painting /RAL must be given/
7. Frequent control of velocity of the metal steel belt.

*The producer keeps the rights to change dimensions provided in this catalogue.*